



New Spring / Summer 2026

Hiking, vanlife and camping collections



 **DECATHLON**

Summary



4

Quechua



6

Hiking



15

Vanlife



18

Camping

Outdoor living at your own pace

Quechua's Spring/Summer 2026 range explores an outdoor culture in constant motion, reflecting how we live and move today.

Whether it's on the hiking trail, families gathered around a tent, the van life scene or activities that fit into your everyday life, our bold new collection is designed with comfort and movement in mind.

Amid the ever-changing variety of outdoor activities, there's one thing that you can always count on: reliable, technical and accessible gear.

The great outdoors is ever-evolving—an entire universe that adapts to your whims, pace and ways of exercising.

Designed and created in the heart of the French Alps, Quechua's latest products are based on one simple belief: that we enjoy the outdoors to the fullest when our equipment adapts seamlessly to those using it.



QUECHUA

Passy (74) - France

QUECHUA, Decathlon's mountain sports brand, has been supporting outdoor enthusiasts since 1997 with a full range of products designed for year-round mountain experiences for all skill levels.

With a dedicated team of designers and a unique design center located at the foot of Mont-Blanc, QUECHUA develops gear for hiking, camping, and winter sports, blending durability and performance to make every mountain adventure unforgettable.



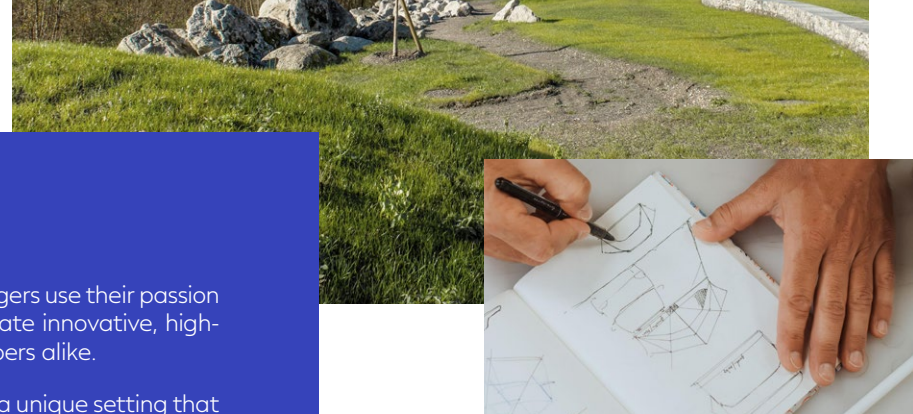
Every day, our design teams made up of engineers, designers, pattern makers, and product managers use their passion and expertise in mountain sports to meet the needs of outdoor enthusiasts. Their goal is to create innovative, high-performance products that offer exceptional experiences for hikers, winter sports fans, and campers alike.

Situated in the heart of the French Alps, near Chamonix, Quechua's global design center provides a unique setting that immerses the team in a mountain environment. This prime location allows them to live and work close to iconic sites that inspire and push their creativity.

Innovation, technical excellence, and sustainability aren't just buzzwords here—they're values that are integral to every project. Collaboration, prototyping, and testing happen in an environment that beats to the rhythm of the mountains, fueling the drive to 'Move people through the wonders of sport.'

This design center is much more than just a workplace: it's a space where a passion for the mountains and a commitment to delivering the best in outdoor sports come together every day.

Charles Helderwerdt, Marketing and Communications Director, QUECHUA



> MORE DETAILS

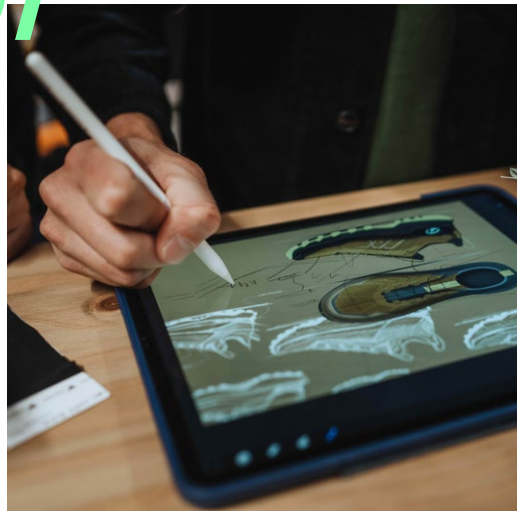
Close to the action

At Decathlon and Quechua, user feedback from multiple sources plays a key role in guiding product design, testing phases, and the continuous improvement of our products.

Co-creating products with users lies at the heart of our development methods. This approach allows us to better meet the expectations of outdoor enthusiasts while sustainably enhancing their sporting experiences.

The Quechua design center, located at the heart of the mountains, has a direct impact on product development. Its location enables long-term partnerships and immediate proximity to real outdoor environments.

01 R&D



03 Textile, tents, footwear and equipment prototyping workshop



02 Ski and Snowboard prototyping workshop



04 Laboratory and field testing

500

EMPLOYEES



PASSY - HAUTE SAVOIE
ALPS - FRANCE



Hiking

Designed for tackling steep inclines

MH900 hiking shoes

Designed for tackling steep inclines

When it comes to long hikes in all conditions, across all types of terrain, the MH900 is Quechua's high-end model for the Spring/Summer 2026 season.

Stable, protective and waterproof, when you go hard it goes harder, on both technical trails and off-trail. Confidence and comfort in every step.



Grip and control across all terrains

The architecture of the outer sole, combined with 6-mm Traction Lug technology and a design that changes depending on the support zone, ensures precise foot control, even on slopes, steep inclines or uneven terrain.

Dynamic cushioning

Drawing inspiration from trail running technology, the MFOAM foam integrated into the midsole provides dynamic cushioning for smoother steps, reducing fatigue over long distances while remaining responsive.

Improved stability and support

For guaranteed stability, these shoes have been specifically designed to include a cupsole, a TPU heel support clip and an internal stabilisation plate. These features form the perfect team for supporting feet and providing greater precision, even on the most technical terrains.

Off-trail protection and durability

Designed to be worn off the beaten path, the MH900 provides full protection from the moulded rubber stone guard at the front, rear TPU reinforcement and an integrated mudguard. Together, they protect feet effectively from impact, abrasion and friction, even on scree and off-trail.

High performance waterproofing with no PFC

The MH900 features a breathable, waterproof, high-performance, PFC-free membrane that can keep feet dry for up to 8 hours in wet conditions. The laminated, seamless design is comfortable and durable, providing reliable long-lasting protection.



Collaboration with Vibram®

For this model, Quechua collaborated with Vibram®, the world leader in outdoor insoles. The VIBRAM® XS TREK EVO compound developed jointly with Decathlon for the MH900 guarantees strong traction, excellent stability and greater durability, whatever the terrain conditions.

Field tests & validation

Created and tested in the heart of the French Alps, the MH900 has been put through its paces for **over 1000 km**, in the laboratory and real-world conditions, enduring rigorous field tests by both the design teams and a panel of expert hikers.

The tests were carried out over a wide variety of terrains: technical trails, scree, slopes, steep inclines and in wet environments, to test and assess their grip, stability, cushioning and durability over time.

This approach means Quechua can guarantee reliable performance in real-world hiking conditions, beyond standard laboratory tests.



Bold design

For the Spring-Summer season 2026, the MH900 is sporting a bold new design that mirrors its technical prowess. Dynamic lines and balanced shapes emphasize high performance without being over-the-top.

The colour range combines vibrant hues designed to appeal to the next generation of hikers, with more understated tones for walkers who prefer discretion without compromising on practicality.

A balance between functionality, high performance and aesthetic appeal, designed for both hardcore hikes and everyday use.



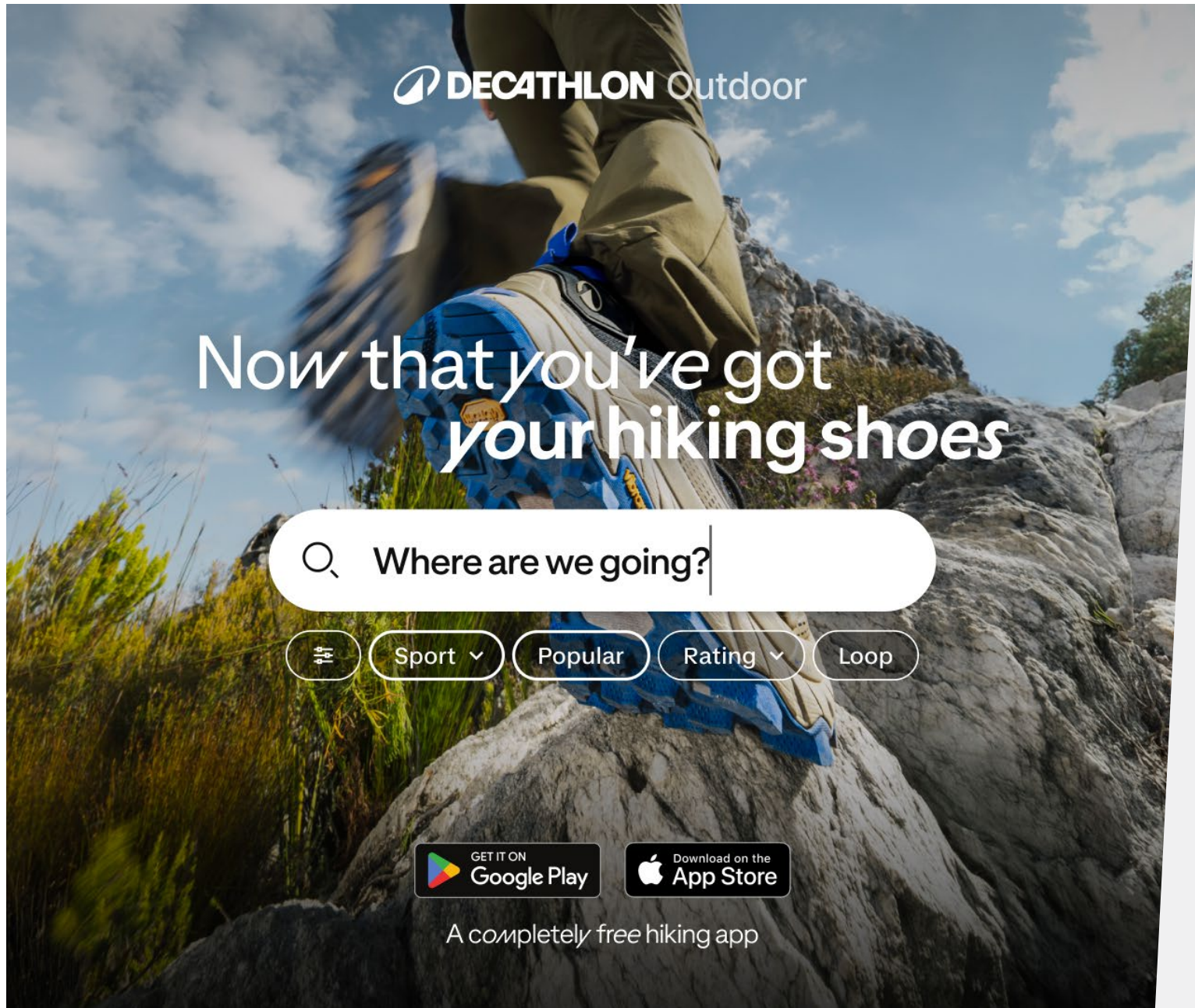
Available in several colours in sizes 39 to 46 for men and 36 to 42 for women - €95

Available [online](#) and in DECATHLON stores

> [DOWNLOAD VISUALS](#)

PROTOTYPE TESTED FOR 8 MONTHS

8 MONTHS & 1200 KILOMETRES



DECATHLON Outdoor

Now that you've got your hiking shoes

🔍 Where are we going?

🏠 Sport ▾ Popular Rating ▾ Loop

GET IT ON
Google Play

Download on the
App Store

A completely free hiking app

Decathlon Outdoor

Decathlon Outdoor is a 100% free and ready-to-use app that allows you to search, plan, create, and share your best hiking and cycling outings, whatever your skill level or motivation





Outdoor gear a style of its own

No longer limited to the trail, people are now incorporating outdoor gear into everyday outfits, visits about town and when travelling : a trend known as gorpcore.

Made to the same technical standards used for hiking, gorpcore has become a style within its own right: functional, clear, confident and now worn as a statement of style.

This trend reflects a deeper shift: the need for clothing and gear that can adapt effortlessly to multiple lifestyles, bridging both nature and everyday life, blending function and fashion. Technical clothing is no longer something to hide; it is proudly shown off, part of the outfit and worn as a statement. People are no longer changing out of it or embarrassed to be seen in it—quite the contrary.

At Quechua, this approach is at the heart of our product design.

Apparel is designed for movement, technical materials are tested in the field and functional details are on full view, not only because they are useful but because they are part of the look. Every item serves its primary purpose: to protect, support and last, while naturally finding a place in life beyond the trail.

The result is a confident outdoor look where technicality and aesthetics fully combine.

A way of bringing the outdoors into the everyday, freely, stylishly and without compromising on practicality.



Shopping WOMEN

- 1. MH100 long, waterproof jacket**, Lightweight and protective, this long jacket features a fitted cut and a sleek design. Designed for movement, it has a 15000-mm Schnerber rating, making it reliably waterproof during a downpour while blending naturally into a bold outdoor gear wardrobe. Available in black, beige and green - €65
- 2. MH500 cycling shorts**, Stretchy cycling shorts made with 30% elastane for a comfortable, snug fit with a tucked-away phone pocket and elasticated waistband. Available in black - €20
- 3. MH500 cropped vest**, A stretchy, breathable cropped vest with a practical cut for staying active with style. Available in purple print and purple - €12
- 4. MH500 lightweight backpack**, A lightweight 15L backpack featuring accessible pockets on the straps and removable hip belt. Sleek design, perfect for carrying the essentials. Available in black - €45
- 5. MH900 lightweight shoes**, Maximum innovation for minimal weight. Stable, lightweight and dynamic, expect precision support with every step. The MFOAM cushioning and Vibram® insole provide comfort and high performance on technical terrain. - €84,99



Shopping men

- 1. MH500 lightweight jacket**, Ultra lightweight and compact, this is the jacket you'll forget you're even wearing, all the while staying sheltered from unpredictable weather. Weighing in at just 365g, the lightest jacket in our range combines protection and breathability in a sleek cut, designed to allow you to move freely. Available in black and olive green - €75
- 2. NH500 shoes**, Our comfortable NH500 shoes will be your favourite travel companion, wherever you end up. With their flexible outsole and soft insole, they feel light and free. Perfect for travelling, walking and exploring, they're the only pair of shoes you'll need. Available in pebble beige and neon pastel orange - €50
- 3. MH900 backpack**, A technical and comfortable 38L backpack designed for carrying more without compromising on practicality. The wrap-around hip belt, ergonomic back ventilation and numerous pockets make staying organised a breeze and keep belongings secure, while the sleek design gives it a seasoned explorer vibe. Available in khaki and blue - €80

Expertly designed for mini adventurers

For over 13 years, our Crossrock shoes have been accompanying kids on all of their outdoor adventures, from their first forest forays to their bravest mountain hikes.

Invented at the foot of Mont Blanc by Quechua teams, they were inspired by one simple lightbulb moment: children don't use gear the way adults do!

They jump, climb, kick stones, stray from the path, over and over. That's why Crossrocks aren't just miniature versions of adult shoes.

They've been specifically designed to be used by children, for their growing feet and their unique way of exploring the world.



Available [online](#) and in DECATHLON stores

Launched in 2011 and marketed since 2012, Crossrocks have quickly become the go-to multi-sport shoes for kids.

Their signature feature is a wrap-around insole that turns up at the front and back to protect the areas impacted most when children play, run or climb off the beaten track.

Over the years, the model has evolved, all the while staying true to its roots.

This year you'll find lighter materials, improved comfort, closures children can fasten and unfasten themselves, but the same old-fashioned standards: reliable shoes that are hardy and fit for the demanding lifestyle of a mini adventurer.

*Available in several colours in low or mid-rise, waterproof or not.
From 30€*

*From 24 to 34 for Velcro models
From 35 to 38 for lace-up models*



*7L teddy bear backpack
available in brown, pink, blue
and orange €12*

> [DOWNLOAD VISUALS](#)

Family escapades reimagined



We're flipping the script on the traditional family camping trip.

Think less structure, more spontaneity and a sense of liberation. Whether for just one night or a few days, camping has become a quick and easy way to enjoy an impromptu family getaway without compromising on comfort or quality time together.

Today, families are finding their own way of enjoying the outdoors.

Some opt for a few days in a traditional campsite, while others have jumped onto the van life bandwagon to enjoy a more spontaneous change of scene.

What they are ultimately seeking is shared experiences: sleeping under the stars, cooking together, slowing down and making memories away from the daily grind.

And Quechua is here for it, every step of the way.

From tents as spacious as actual base camps to nomadic solutions, like rooftop tents, all our equipment is designed to keep adventure accessible, fuss-free and within easy reach.

It is families themselves who have inspired Quechua's new collection, designed to inspire getaways that embrace freedom and spontaneity, while remaining family-friendly.

A fresh approach to camping together under the stars.

Vanlife



Rooftop tent for 4 people

Designed to make family escapades straightforward as possible, the Quechua rooftop tent is a quick, easy and comfortable sleeping solution without needing to be pitched on the ground.

It transforms an already packed vehicle into spacious, secure, functional sleeping quarters that can accommodate 4 people.

Rooftop tent €1999

A patented design for families

There are no fewer than **5 patents** for our roof tent, all so that we can save time, improve comfort and promote calm.

- Self-deploying tent due to the two gas struts, providing generous sleeping space and a secure opening.
- Self-deploying side panels for faster assembly and improved protection.
- Easy-open side vents using just one hand
- Built-in skylight to aid ventilation and enjoy a view of the stars
- Fresh & Black fabric to block out heat and light for better quality sleep

Vanlife time together, anywhere, any way



Available [online](#) and in DECATHLON stores



CAPACITY

2 adults and 2 children

DIMENSIONS

When open: 200 × 213 × 110 cm
When packed down: 210 × 115 × 30 cm
Built-in 6-cm foam mattress

TECHNICITY

Modular interior partition (3 configurations)
Interior storage compartments and external shoe pockets
Opens and closes in under 2 minutes
Self-deploys with gas struts
Time to install on roof bars: ~15 minutes (4 people recommended)
Fresh & Black Technology
Double roof to limit condensation
Easy-to-open side vents
Integrated skylight
Wind resistant up to 60 km/h (tested in a wind tunnel)
Maximum static load: 250 kg
Approved roof bars (dynamic load ≥ 80 kg)
Minimum distance between bars: 75 cm

WEIGHT

80 kg

> [DOWNLOAD VISUALS](#)



TRAVEL 500 ORGANIZER 30L Backpack

Designed for light, organised travel, the TRAVEL 500 Organizer backpack is perfect for short, fuss-free trips for a few days.

With its integrated suitcase-like opening, you can quickly access all your belongings, while enjoying all the portability of a backpack.

Compact, well-organised and comfortable to carry, it's just the ticket for a spontaneous weekend away.

Designed for when you want everything to hand without any inconvenience.

Also available in 40L for even more space.

Available in 2 colours - €60



Available [online](#) and in DECATHLON stores

Picnic blanket



To enjoy even more memorable family time outdoors, our new picnic blanket is an upgraded, bolder, patterned version of a familiar camping essential.

Both practical and attractive, sitting on the grass, lazing by a lake or taking an impromptu break as a family has never been so inviting! It can comfortably accommodate up to four happy campers and the printed design adds a cheerful splash of colour.

Easy to carry and quick to deploy, it's here to remind you that you can absolutely be stylish and comfortable at the same time.

A simple accessory for spending time together and making the most of the outdoors, wherever you happen to be.

Available in several colours - €12

MH500 low camping chairs

Highly compact and easy to transport, our low camping chairs combine comfort with attractive prints for kicking back in style.

The lightweight, low-slung design make it the perfect piece of furniture for perching anywhere you please: around a fire, by a lake or on the grass, all the while spending precious time with loved ones.



Available in several colours - €40

> [DOWNLOAD VISUALS](#)



AIRSECONDS 4.2 XXL Fresh & Black inflatable tent

Designed for family camping holidays, the AIRSECONDS 4.2 XXL Fresh & Black offers a spacious communal area where everyone has their own space.

With two separate rooms and a large communal area, people can spend quality together time for meals, games and down time, while enjoying their own privacy at night.

Easy and quick to set up due to the inflatable all-in-one structure, this tent is designed to keep family camping simple. Once it's up, it makes a comfortable base for living outside for several days, even with young children.

The XXL living area, the generous height and the large openings all make it a sociable atmosphere under the canvas. Essential comfort for fully enjoying family camping, without constraints or compromises.

AIRSECONDS 4.2 XXL Inflatable tent €790

Comfort designed with families in mind 

The Fresh & Black technology created and patented by DECATHLON vastly improves the quality of life in the tent.

By limiting heat and light, both children and adults get a better night's sleep, even when the sun is early to rise.

Combined with improved ventilation, large windows and abundant storage space, it helps create a sociable living area from morning to night—one of the key ingredients for a successful family holiday.

Pause, breathe, camp



Available [online](#) and in DECATHLON stores



CAPACITY

4 people

DIMENSIONS

2 separate rooms

Room dimensions: 140 × 210 cm

Main living area 8 m²

Height under tent: 2.10 m

4 m² awning to extend the living space

Each room can accommodate: 2 x 70 cm mattresses or 1 x 140 cm mattress

TECHNICITY

6 large windows (Mesh & PVC)

All-in-one inflatable structure

Pre-assembled rooms and double roof

Fast assembly, 2 people recommended (possible alone)

Recommended inflation 7 PSI with Quechua Ultim Comfort pump (not included)

Fresh & Black technology

Optimised ventilation for better air circulation

Large side doors

Zip floor mat

Ample storage space

Interior partition

> [DOWNLOAD VISUALS](#)

XL portable camping BBQ for 4-8 people

Quechua's XL portable BBQ for 4 to 8 people is another excuse for families to get back to basics and enjoy more of the simpler and tastier things in life. Gathered around the fire with parents cooking while the children play, mealtimes make for cherished time together.

The BBQ's conveniently large cooking area makes it easy to rustle up an entire meal for the whole clan. Easy to transport, quick to set up and suitable for use with wood, coal and briquettes, it's suitable for all types of getaways, from camping to holidays and picnics—or even at home in the garden.

Robust, practical and sociable, the XL BBQ follows families wherever they're making memorable moments.

Portable camping BBQ €80



> DOWNLOAD VISUALS



Available [online](#) and in DECATHLON stores



Contacts

DECATHLON

Decathlon is a global brand specializing in sports, catering to everyone from beginners to seasoned athletes. As an innovator in the manufacturing of sports products for all skill levels, Decathlon employs 101,000 teammates and operates 1,750 stores worldwide. Since 1976, its teams have worked with a constant ambition: to inspire people to move through the wonders of sport, helping them to be healthier and happier while building a sustainable future.

Media contact

media@decathlon.com

QUECHUA

DECATHLON's specialist in mountain sports continues to rely on its outdoor heritage to equip all mountain enthusiasts: from hikers to campers, and winter sports practitioners of all levels. Based at the foot of Mont Blanc since 1997, QUECHUA develops accessible, durable, technical, and high-performance products to enable everyone to fully experience the mountain all year round.

Maguy Nantermoz

maguy.nantermoz@quechua.com

+33 (0)6 79 49 16 56